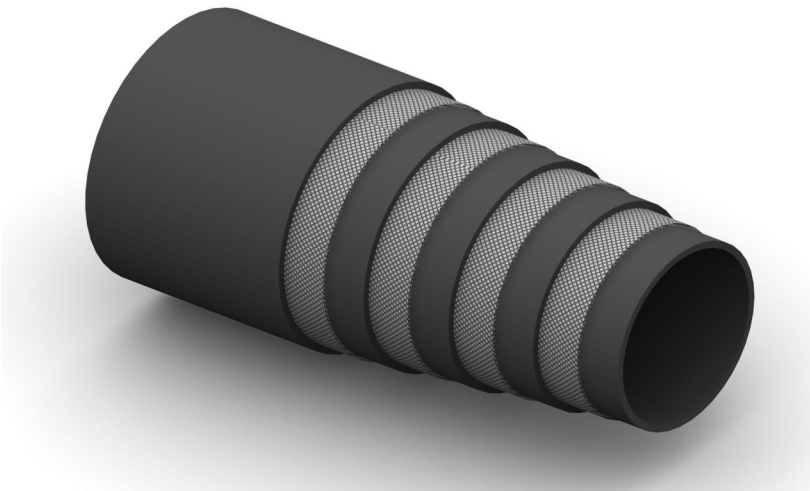


R13 Four or Six Wire Spiral



Construction:

Tube: Seamless Synthetic Rubber.

Reinforcement: 4 or 6 Spirals of High Tensile Wire.

Cover: Black Synthetic Rubber; Weather, Oil, Fuel and Abrasion Resistant.

Temperature Range: -40°C To +121°C.

Meets or exceeds the requirements of SAE J517 100 R13 – EN 856 R13 - ISO 3862
 Meets flame resistance acceptance designation US MSHA IC - 152/1

Part No	Inside Dia		O.D.	Working Pressure		Minimum Burst Pressure		Min Bend Rad	Weight
	mm	Inch		mm	Bar	PSI	Bar		
R13-04	6.4	1/4	20.6	776	11250	3100	44950	127	0.93
R13-06	9.5	3/8	23.8	690	10000	2760	40020	152	1.10
R13-08	12.7	1/2	27.0	512	7500	2070	30015	200	1.35
R13-12	19.0	3/4	32.0	345	5000	1380	20000	240	1.65
R13-16	25.4	1	39.2	345	5000	1380	20000	300	2.25
R13-20	31.8	1.1/4	49.8	345	5000	1380	20000	420	3.60
R13-24	38.1	1.1/2	57.3	345	5000	1380	20000	500	4.75
R13-32	50.8	2	71.9	345	5000	1380	20000	630	6.90