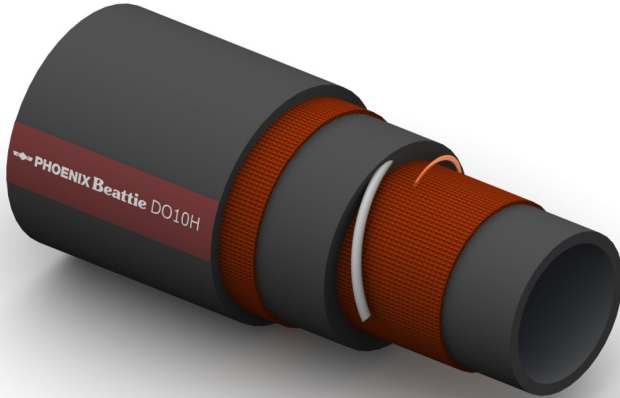


## DO10H Fuel and Oil Suction and Delivery



**Construction:**

**Tube:** Black NBR.

**Reinforcement:** High Tensile Textile Cords with Embedded Steel Helix Wire And Antistatic Wire.

**Cover:** Black CR/BR Blend; Abrasion, Ozone and Hydrocarbon Resistant.

**Temperature Range:** -30°C To +100°C.

**Typical Application:** Fuel Oil Suction and Delivery, with up to 50% Aromatic Content, suitable for Seawater, Mud and general offshore applications, long lasting in heavy duty applications.

**Branding:**  **PHOENIX Beattie DO10H OIL SUCTION & DELIVERY WP 10 BAR** 

Part No	Inside Dia		O.D.	Working Pressure		Minimum Burst Pressure		Min Bend Rad	Weight
	mm	Inch		Bar	PSI	Bar	PSI		
DO10H-032	51	2	66	10	150	40	600	255	2.20
DO10H-048	76	3	92	10	150	40	600	380	3.20
DO10H-064	102	4	120	10	150	40	600	510	5.40
DO10H-080	127	5	150	10	150	40	600	635	7.80
DO10H-096	152	6	175	10	150	40	600	760	10.40
DO10H-128	202	8	234	10	150	40	600	1010	17.20
DO10H-160	252	10	288	10	150	40	600	1260	26.20
DO10H-192	305	12	343	10	150	40	600	1525	36.50