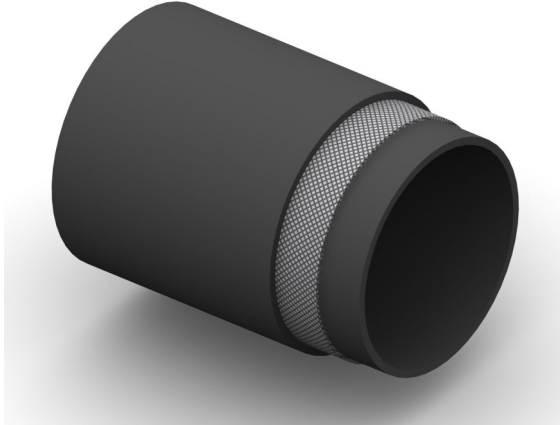


BW7 Exceeds The Requirements Of SAE 100R1



Construction:

Tube: Nylon 11.

Reinforcement: Single High Tensile Steel Wire Braid.

Cover: Chemical Resistant Polyurethane.
(Pin Pricked For Gas Applications)

Temperature Range: -40°C To +95°C.

Application: Suitable for many Industrial Gases, (eg. Helium, Air, Helox – Max 25% O2) and Hydraulic Oils.

| Part No | Inside Dia | | O.D. | Working Pressure | | Minimum Burst Pressure | | Min Bend Rad | Weight |
|---------|------------|------|------|------------------|------|------------------------|-------|--------------|--------|
| | mm | Inch | | mm | Bar | PSI | Bar | | |
| BW7-03 | 5 | 3/16 | 9.3 | 345 | 5000 | 1380 | 20000 | 38 | 0.10 |
| BW7-04 | 6 | 1/4 | 11.8 | 293 | 4250 | 1172 | 17000 | 51 | 0.16 |
| BW7-05 | 8 | 5/16 | 13.6 | 276 | 4000 | 1104 | 16000 | 51 | 0.19 |
| BW7-06 | 10 | 3/8 | 15.5 | 232 | 3375 | 930 | 13000 | 63 | 0.25 |
| BW7-08 | 12 | 1/2 | 18.6 | 190 | 2750 | 760 | 11000 | 75 | 0.31 |
| BW7-10 | 16 | 5/8 | 23.5 | 172 | 2500 | 690 | 10000 | 203 | 0.43 |
| BW7-12 | 19 | 3/4 | 27.0 | 138 | 2000 | 552 | 8000 | 241 | 0.50 |
| BW7-16 | 25 | 1 | 33.5 | 100 | 1450 | 400 | 5800 | 305 | 0.62 |