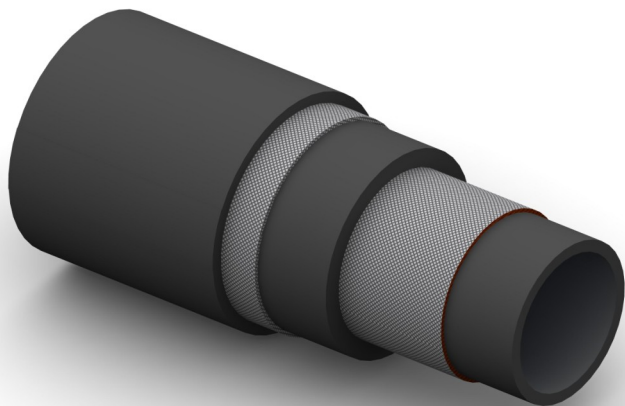


**BT9** SAE 100R8



**Construction:**

**Tube:** Polyelastomer / Nylon

**Reinforcement:** Aramid Fibre Braid/s.

**Cover:** Black, Chemical Resistant Polyurethane.  
(Pin Pricked for Gas Applications)

**Temperature Range:** -40°C To +95°C.

**Application:** Suitable for many Industrial Gases, (eg. Helium, Air, Helox – Max 25% O<sub>2</sub>) and Hydraulic Oils.

Part No	Inside Dia		O.D.	Working Pressure		Minimum Burst Pressure		Min Bend Rad	Weight
	mm	Inch		Bar	PSI	Bar	PSI		
BT9-03	5	3/16	10.4	345	5000	1379	20000	50	0.07
BT9-04	6	1/4	12.7	345	5000	1379	20000	50	0.09
BT9-05	8	5/16	15.0	293	4250	1172	17000	63	0.11
BT9-06	10	3/8	16.3	276	4000	1103	16000	63	0.13
BT9-08	12	1/2	20.0	241	3500	965	14000	100	0.19
BT9-10	16	5/8	23.1	190	2750	758	11000	203	0.23
BT9-12	20	3/4	27.9	155	2250	620	9000	254	0.26
BT9-16	25	1	35.8	138	2000	552	8000	305	0.36