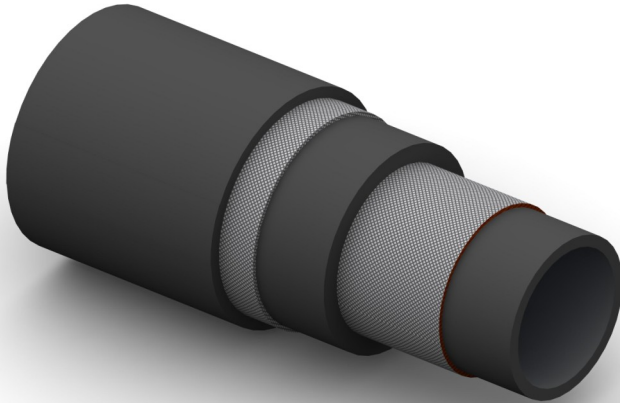


BT20 Exceeds The Requirements Of SAE 100R7



Construction:

Tube: Seamless Polyester Elastomer.

Reinforcement: Polyester Fibre Braid/s.

Cover: Polyurethane. (Pinpricked For Gas Applications)

Temperature Range: -40°C To +95°C.

Application: Suitable for many Industrial Gases, (eg. Helium, Air, Helox – Max 25% O₂) and Hydraulic Oils. Recommended for high pressure applications where low volumetric expansion and corrosion resistance is essential.

Part No	Inside Dia		O.D.	Working Pressure		Minimum Burst Pressure		Min Bend Rad	Weight
	mm	Inch		mm	Bar	PSI	Bar		
BT20-03	3	1/8	10.4	207	3000	825	12000	70	0.07
BT20-04	6	1/4	12.7	190	2750	750	11000	70	0.09
BT20-05	8	5/16	15.0	172	2500	690	10000	89	0.11
BT20-06	10	3/8	16.3	155	2250	620	9000	127	0.13
BT20-08	13	1/2	20.0	140	2000	550	8000	178	0.19
BT20-10	16	5/8	23.1	100	1500	410	6000	203	0.23
BT20-12	20	3/4	27.9	90	1250	345	5000	254	0.26
BT20-16	25	1	35.8	70	1000	270	4000	305	0.36