

Hammer Lug Unions are available in a wide range of sizes and in working pressures up to 20,000 psi providing pressure tight, positive sealing.

Seal types vary according to pressure and application.

Available for standard, cold temperature and sour gas applications.

Sour gas application unions are manufactured in accordance with NACE MR-01-75.
(Latest revision)

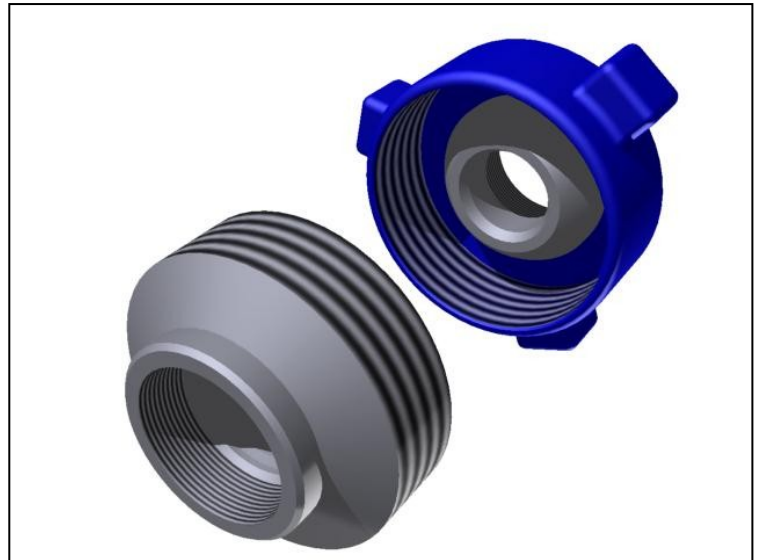


Figure 50 500 psi cwp (35 bar)

Metal to metal ball and cone seal.
Available threaded or socket weld in 4" or 5" sizes.

Figure 100 1,000 psi cwp (69 bar)

A low pressure general purpose threaded union suitable for air, water, oil or gas service.
Metal to metal ball and cone seal.
Available in 2", 2.1/2", 3", 4", 5", 6" & 8" sizes.

Figure 200 2,000 psi cwp (138 bar)

General purpose union designed to meet a variety of applications in threaded or butt weld options.
Metal to metal ball and cone seal.
Available in 1", 1.1/4", 1.1/2", 2", 2.1/2", 3", 4", 5", 6" & 8" sizes.

Figure 206 2,000 psi cwp (138 bar)

Identical to the Fig 200 union with a secondary 'O' ring seal to supplement the metal to metal ball and cone seat.
Available in 1", 1.1/4", 1.1/2", 2", 2.1/2", 3", 4", 5", 6" & 8" sizes.

Figure 207 2,000 psi cwp (138 bar)

Blanking cap fully interchangeable with Figure 200 and 206 unions.
For use where blanking off at the end of a line is required. The cap is fitted with an 'O' ring seal to ensure a leakproof seal.
Available in 3", 4" & 6" sizes.

Figure 600 6,000 psi cwp (414 bar)

A bronze seated union designed to combat rust and corrosion, where a metal to metal seal is desirable.
Ideal for steam service.
Available in 1", 2", 3" & 4" sizes – threaded.

Figure 602 6,000 psi cwp (414 bar)

General purpose union designed to meet a variety of applications in threaded or butt weld options.
Metal to metal ball and cone seal.
Available in 1", 1.1/2", 2", 3" & 4" sizes.

Figure 1002 10,000 psi cwp (690 bar) – 1” to 4”, 7,500 psi cwp (483 bar) – 5” & 6”.

General purpose union designed to meet a variety of applications. Fitted with a secondary elastomeric seal to supplement the metal to metal ball and cone seat.

Sizes 1”, 2”, 3” & 4” are designed for 10,000 psi and are fitted with a lip type seal and are available either threaded or butt weld.

Sizes 5” & 6” are designed for 7,500 psi and are fitted with an ‘O’ ring seal and are only available in butt weld option.

Figure 1003 10,000 psi cwp (690 bar) – 2” & 3”, 7,500 psi cwp (483 bar) – 4” & 5”.

Misalignment unions capable of up to 7.1/2° misalignment off the centerline (15° included).

Note: 2” union limited 3.1/2° misalignment off the centerline (7° included).

Sizes 2” & 3” are designed for 10,000 psi and are available either threaded or butt weld.

4” & 5” are designed for 7,500 psi.

4” available either threaded or butt weld, 5” only available as butt weld.

Figure 1004 10,000 psi cwp (690 bar).

Sizes 5” & 6”, fitted with an elastomeric lip seal and are only available in butt weld option.

Figure 1502 15,000 psi cwp (1034 bar).

The most widely used union within the range, suitable for a wide range of applications.

Metal to metal ball and cone seal.

Available in 1”, 1.1/2”, 2”, 3” & 4” sizes threaded or butt weld options.

5” & 6” sizes available butt weld only.

Figure 2002 20,000 psi cwp (1380 bar).

Fitted with lip type elastomer seal and anti extrusion ring.

Available in 2”, 3”, 4”, 5” & 6” sizes butt weld option only.

Figure 2202 15,000 psi cwp (1034 bar).

Sour gas union fitted with elastomer seals and stainless steel anti extrusion rings fitted as standard.

Available in 2”, 3”, 4”, 5” & 6” sizes butt weld only.

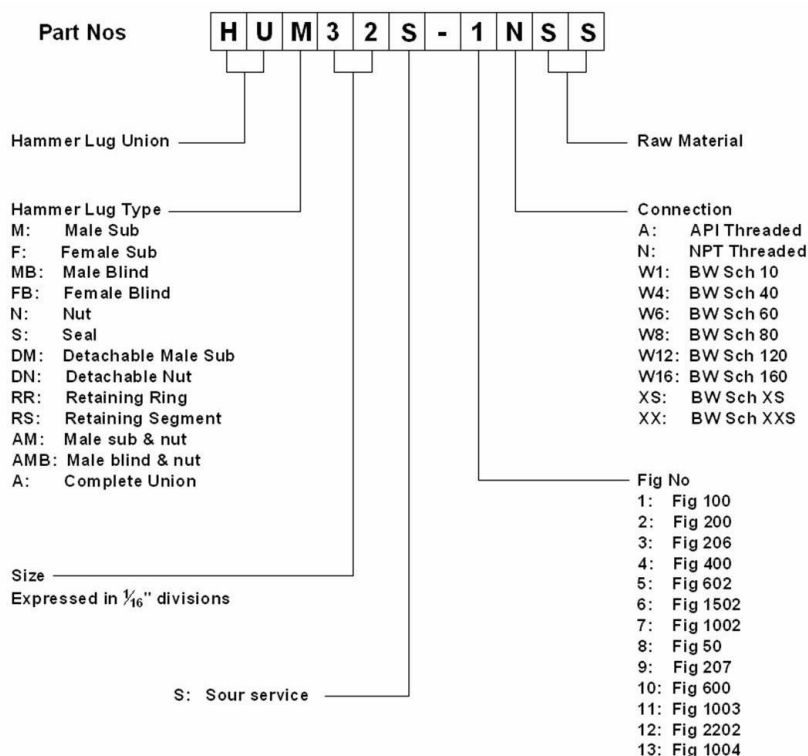


FIG NO	COLOUR KEY FOR BODY	COLOUR KEY FOR NUT	PRESSURE RATING (psi)				NOMINAL PIPE SIZES INCHES & mm									
			STANDARD SERVICE		SOUR GAS SERVICE		1	1.1/4	1.1/2	2	2.1/2	3	4	5	6	8
			COLD WORK-ING	TEST	COLD WORK-ING	TEST	25	32	40	50	65	80	100	125	150	200
50	Red	Red	500	750	N/A	N/A						✓	✓			
100	Yellow	Black	1000	1500	N/A	N/A				✓	✓	✓	✓	✓	✓	✓
200	Grey	Blue	2000	3000	2000	3000	✓	✓	✓	✓	✓	✓	✓	✓	✓	✓
206	Grey	Blue	2000	3000	2000	3000	✓	✓	✓	✓	✓	✓	✓	✓	✓	✓
207	Grey	Blue	2000	3000	2000	3000						✓	✓		✓	
600	Grey	Black	6000	9000	N/A	N/A	✓		✓	✓	✓	✓	✓			
602	Yellow	Black	6000	9000	6000	9000	✓		✓	✓	✓	✓	✓			
1002	Blue	Red	10000	15000	7500	11250	✓		✓	✓	✓	✓	✓	✓	✓	
1003	Green	Black	10000	15000	7500	11250				✓		✓	✓	✓		
1004	Grey	Red	10000	15000	7500	11250								✓	✓	
1502	Red	Blue	15000	22500	10000	15000	✓		✓	✓		✓	✓	✓	✓	
2002	Grey	Green	20000	30000	N/A	N/A				✓		✓	✓	✓	✓	
2202	Grey	Light Green	N/A	N/A	15000	22500				✓		✓	✓	✓	✓	